

Required parking at %100 occupancy-

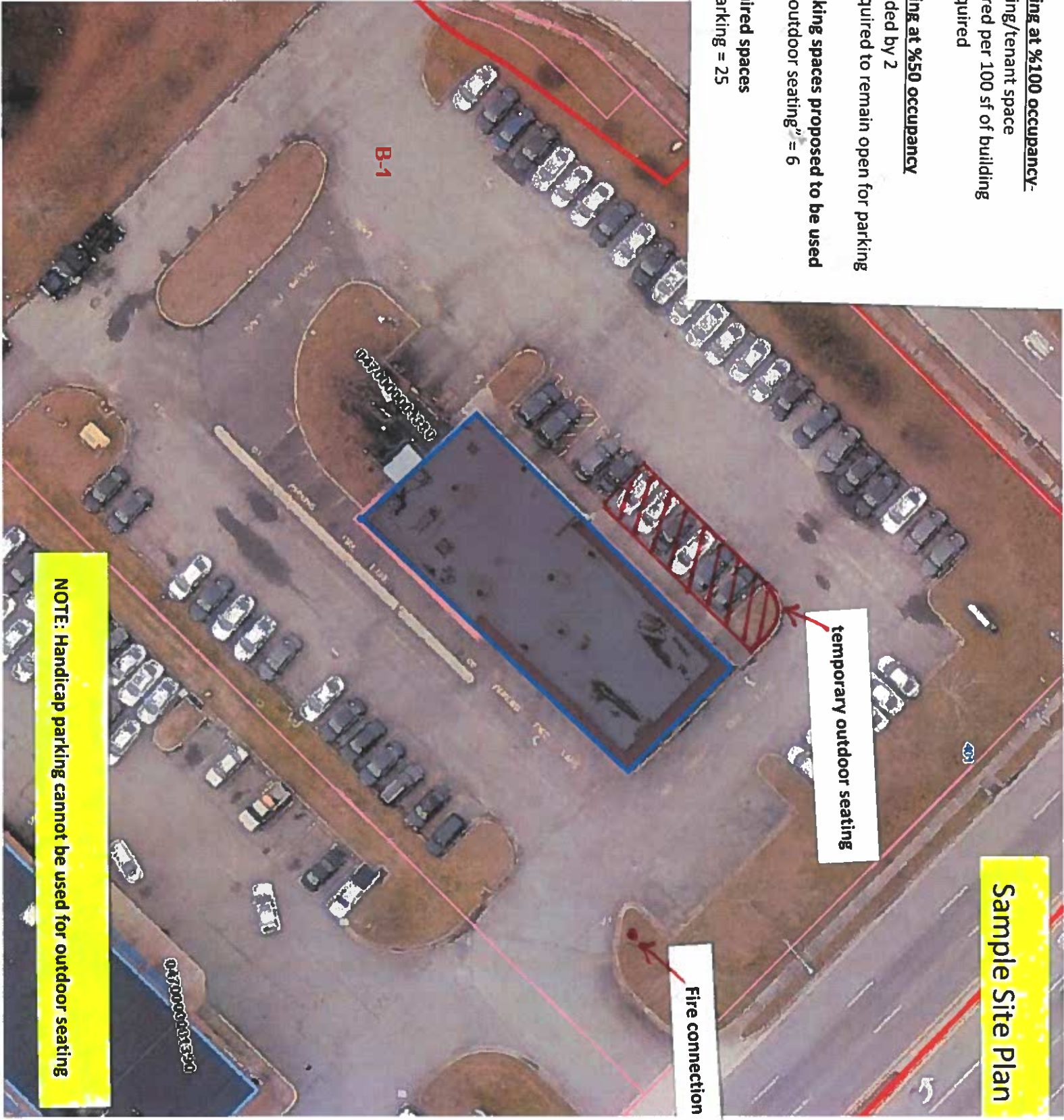
- 5,000 sf building/tenant space
- 1 space required per 100 sf of building
- = 50 spaces required

Required parking at %50 occupancy

- 50 spaces divided by 2
- = 25 spaced required to remain open for parking

Number of parking spaces proposed to be used for temporary outdoor seating" = 6

Minimum required spaces for customer parking = 25



B-1

NOTE: Handicap parking cannot be used for outdoor seating

Sample Site Plan