





I-64 Southside / High Rise Bridge



# I-64 Southside Widening and High Rise Bridge Phase 1 Project

## Presented To:

City of Chesapeake  
Economic Development Advisory Committee (EDAC)  
October 9, 2020

## Presented By:

Rick Correa, PE  
VDOT | Senior Project Manager  
Tom Boyle, PE  
Granite-Parsons-Corman, JV | Project Executive  
Shelby Frank  
Granite-Parsons-Corman, JV | Public Communications Officer



# Agenda

- **Project Overview**
- **Current Construction Status**
- **Public Relations and Communication**
- **Questions**

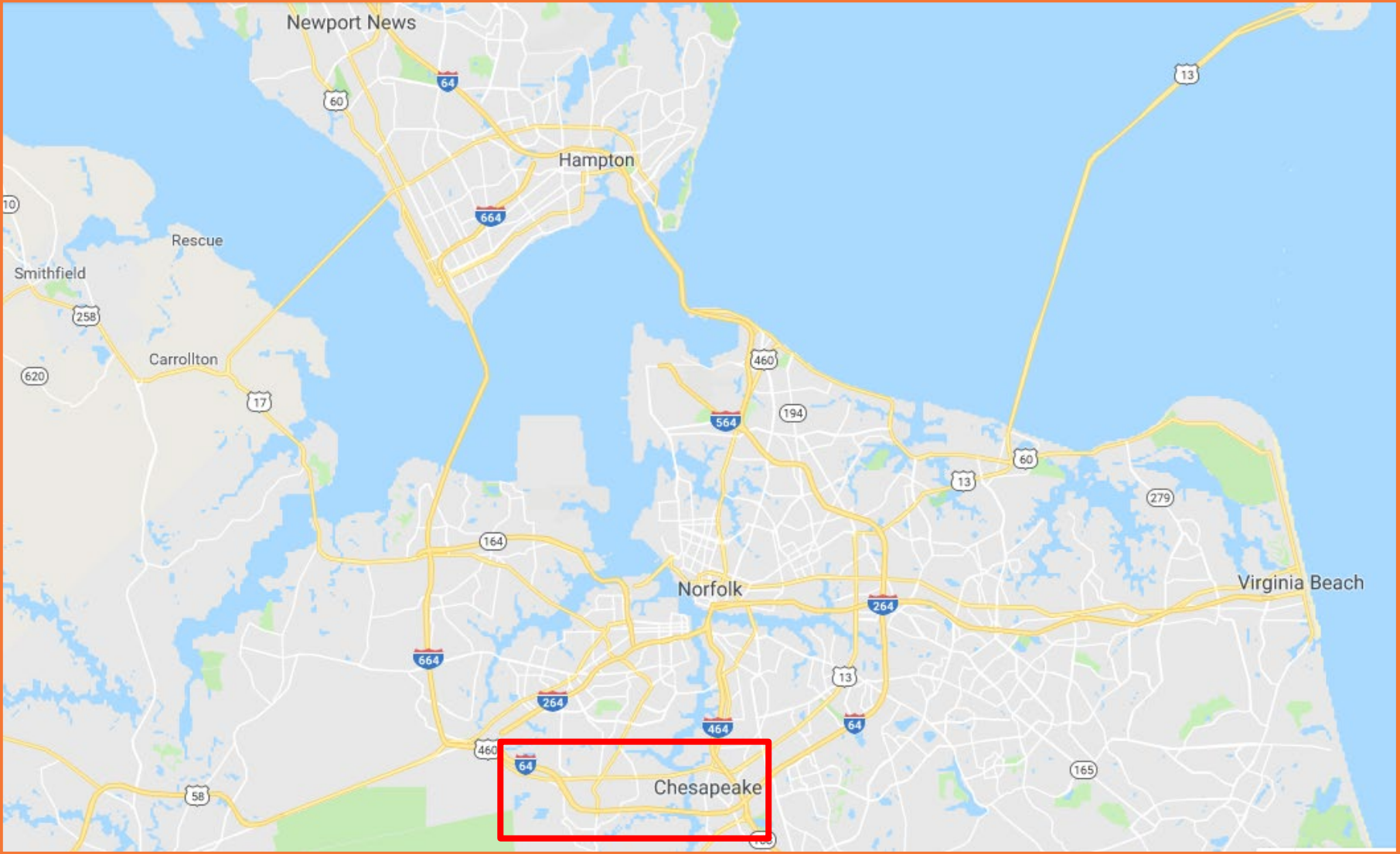


# Project Overview



*Rendering of New High Rise Bridge*

# Project Location



# Project Goals

- Increase capacity
- Improve safety
- Enhance emergency evacuation route



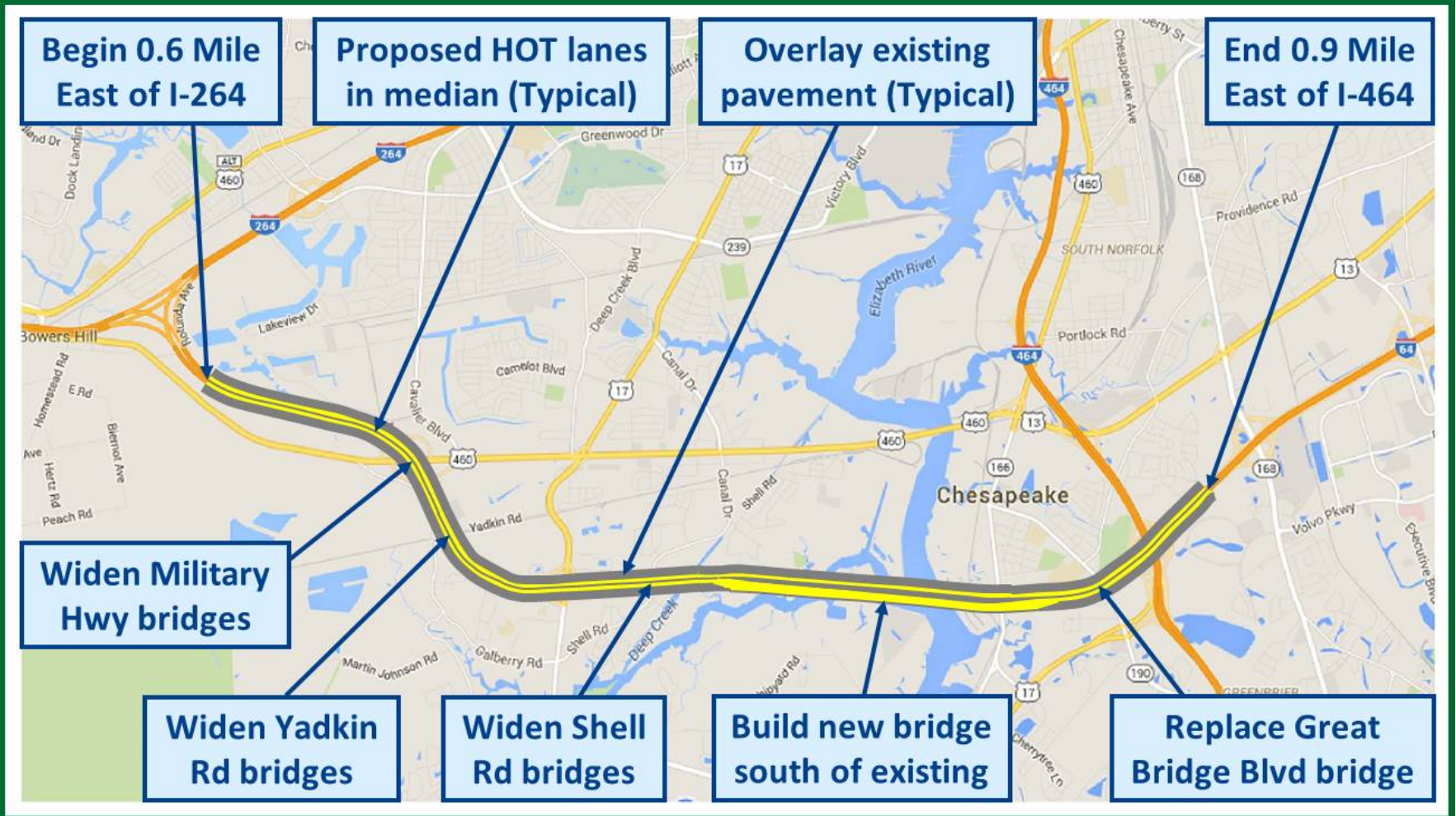
I-64 Southside / High Rise Bridge



# Project Scope

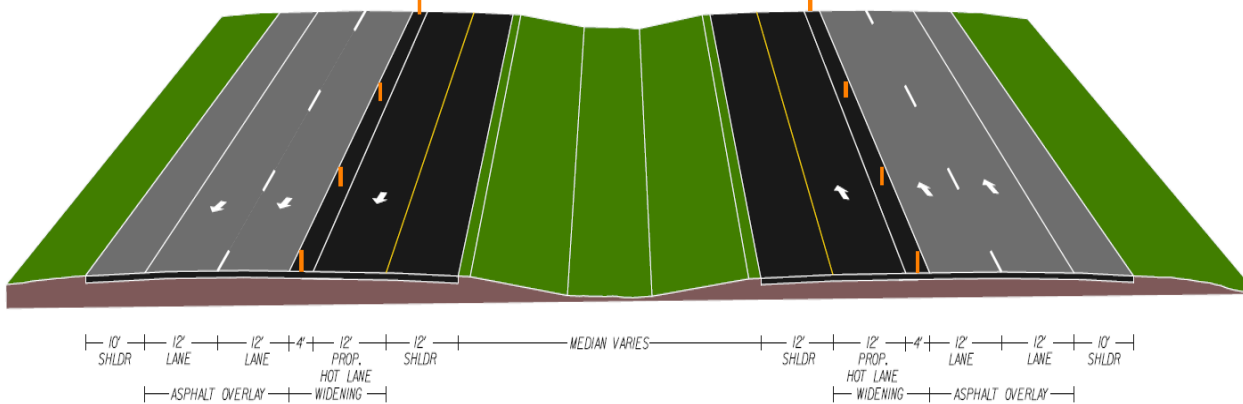
## I-64 Southside Widening and High Rise Bridge, Phase 1

Total Project Length – 8.75 Miles

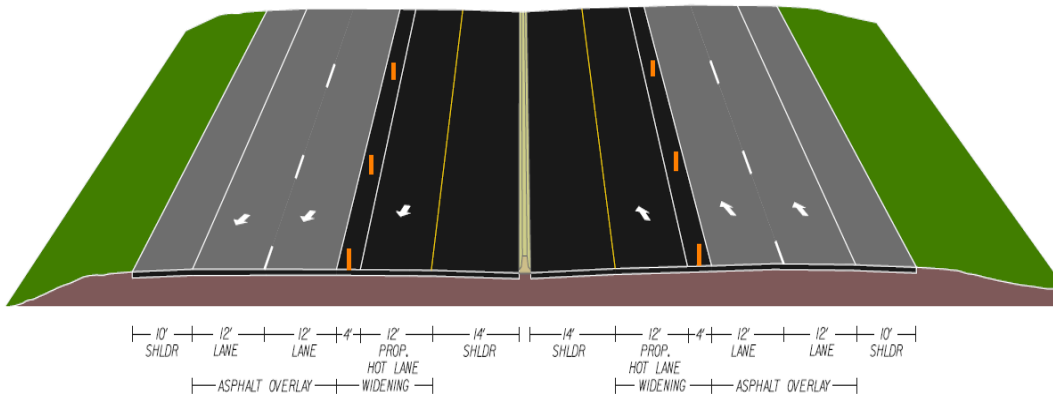


# Roadway Typical Sections

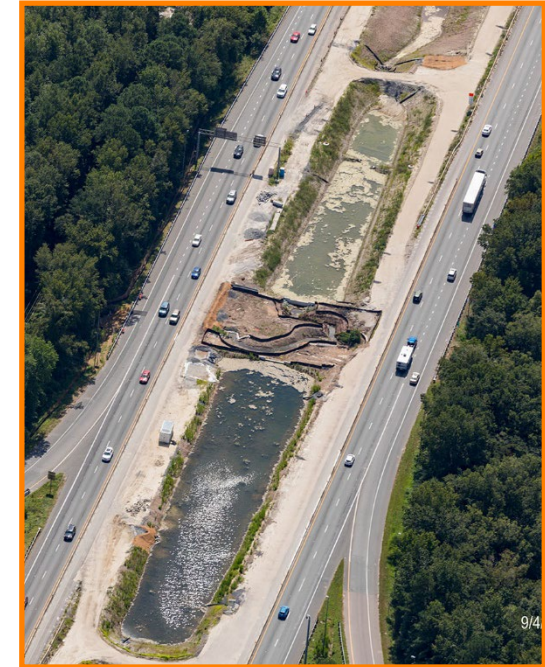
**I-64 Widening**  
From Beginning of Project to Rte. 17



**I-64 Widening**  
From Rte. 17 To Project End



**Median > 30' = Grass, west of Rte. 17**  
**Median < 30' = Concrete Barrier, east of Rte. 17**



- **Widen I-64 from 4 lanes to 6 lanes**
- **One HOT lane, and 2 general purpose lanes in each direction**
- **4" asphalt overlay on existing lanes**

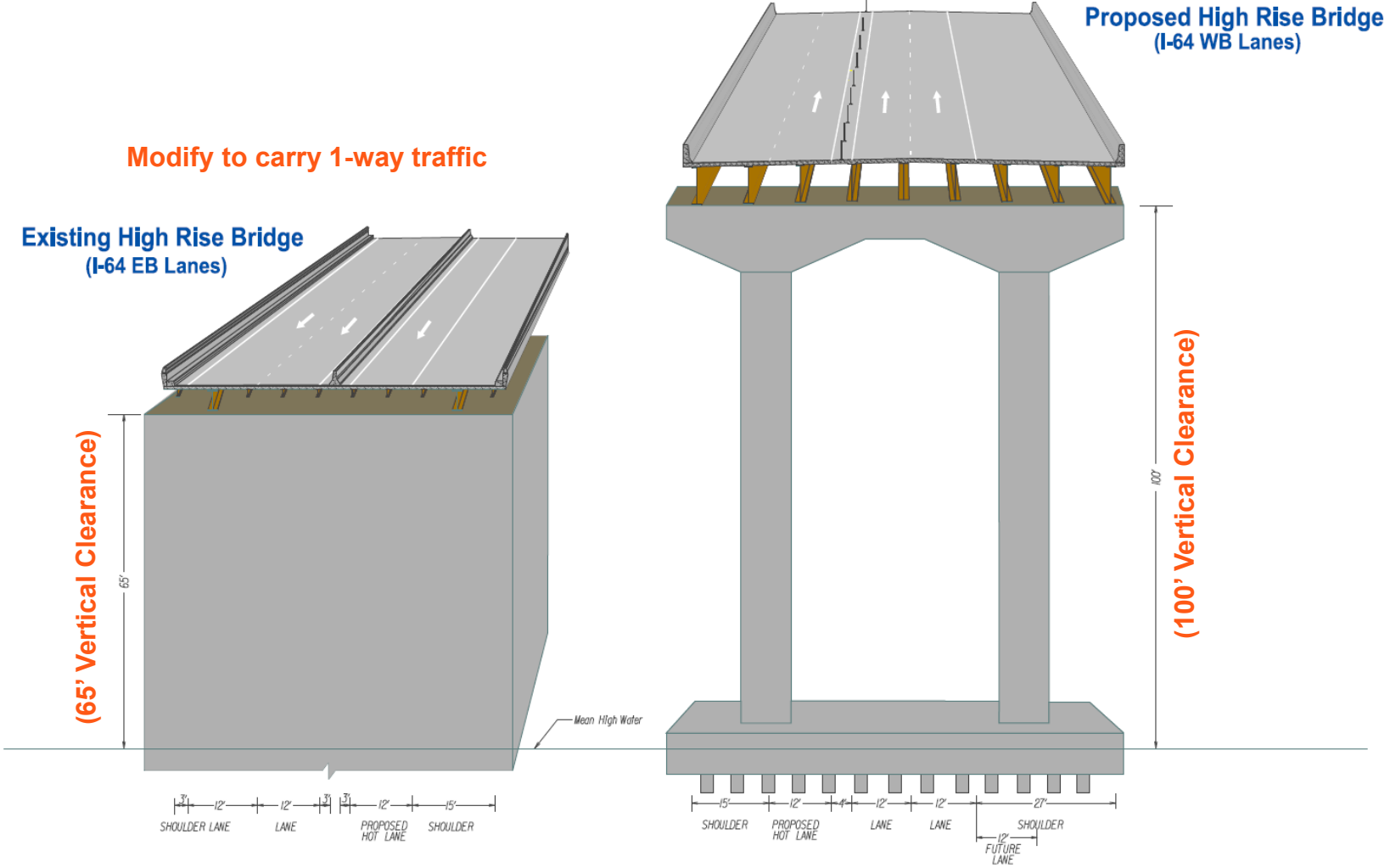


# Noise Barriers

**Project includes about 8 miles of noise barriers**

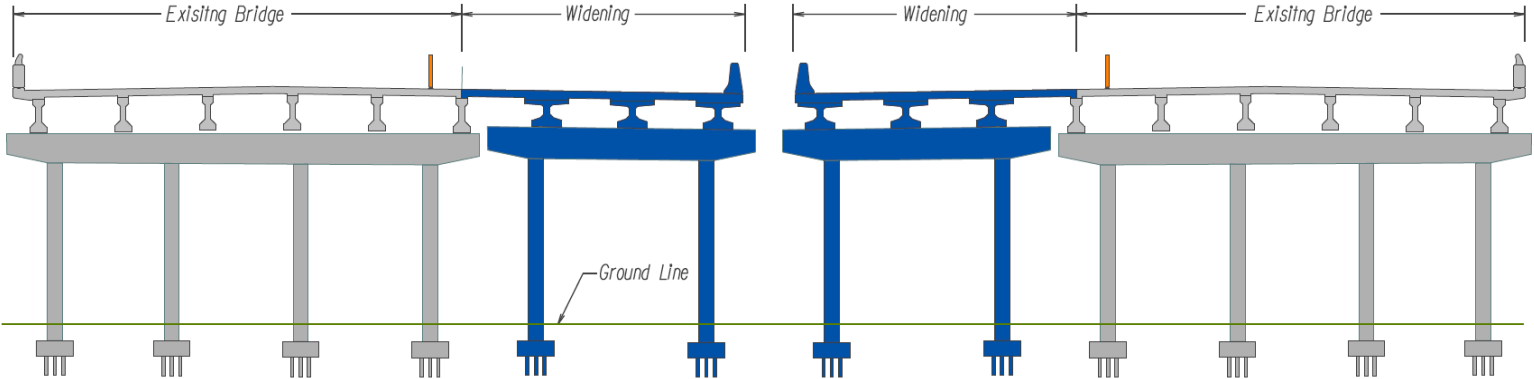


# Existing and Proposed High Rise Bridges

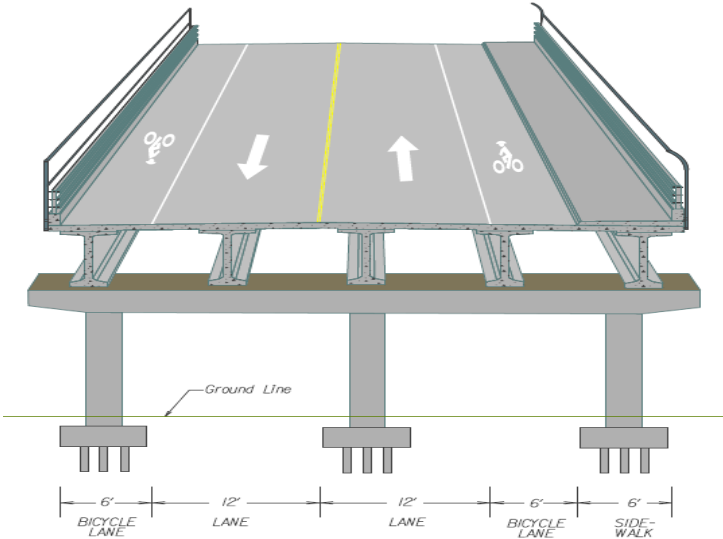


# Other Bridges

- **Six I-64 Bridge Widening**
  - **I-64EB and I-64WB Over Military Hwy, Over Yadkin Rd, and Over Shell Rd**



- **Great Bridge Blvd Bridge Replacement**



# HOT Lane Features

- **HOT Lane Infrastructure for electronic toll collection (ETC)**
  - **One toll location on a gantry for each direction of travel**
- **Traffic Management System (TMS)**
  - **Dynamic Message Signs (DMS)**
  - **Microwave Vehicle Detection Sensors (MVDS)**
- **Contract change being negotiated to add roadway and drainage infrastructure for Future Part-Time Shoulder Express Lanes**



**I-495 (Capital Beltway) in Northern Virginia**

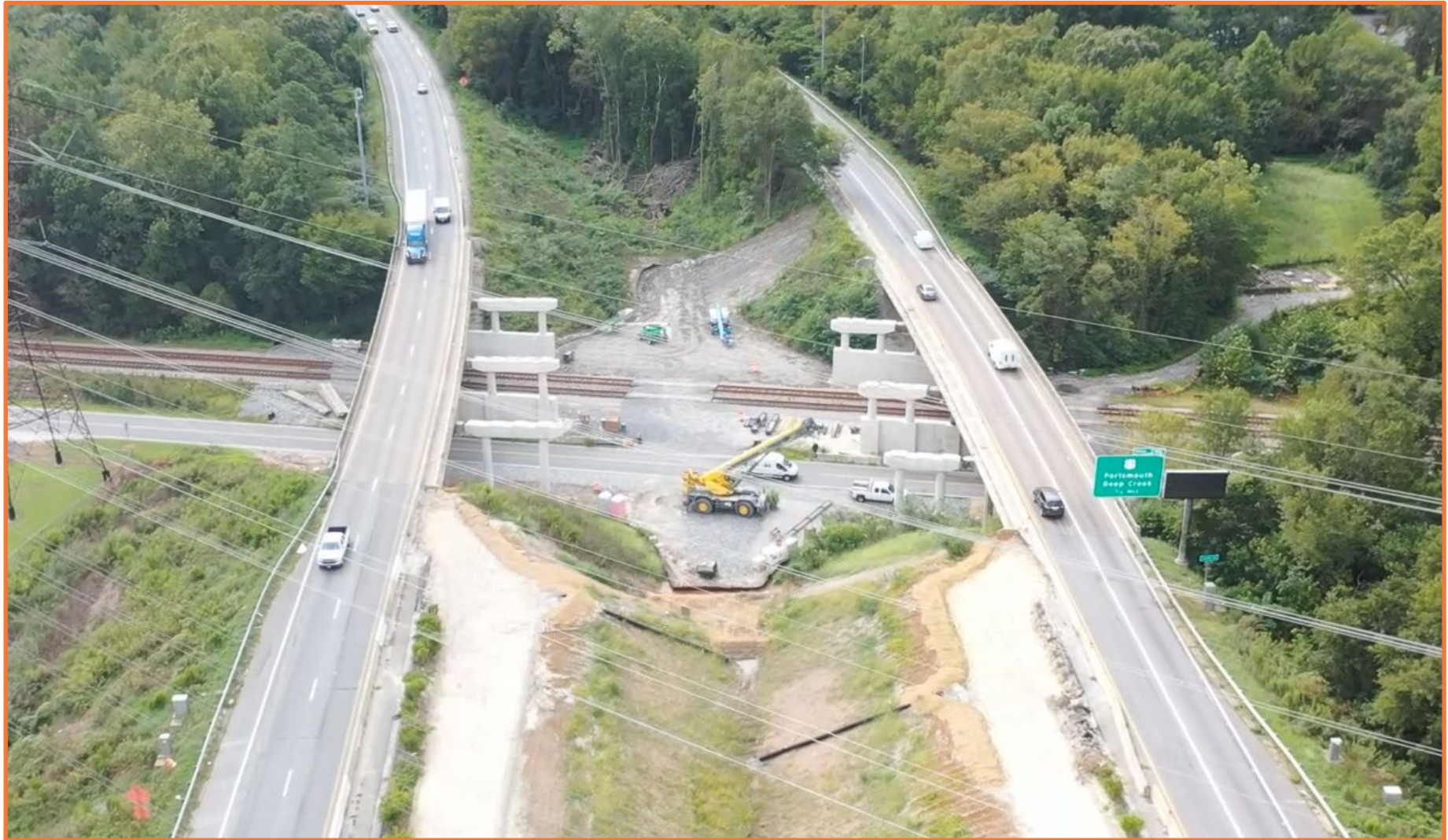
# Current Construction Status and Schedule



# Roadway Segment West 1



# Yadkin Road Bridge Widenings



# Roadway Segment West 3 (Approach to High Rise Bridge)

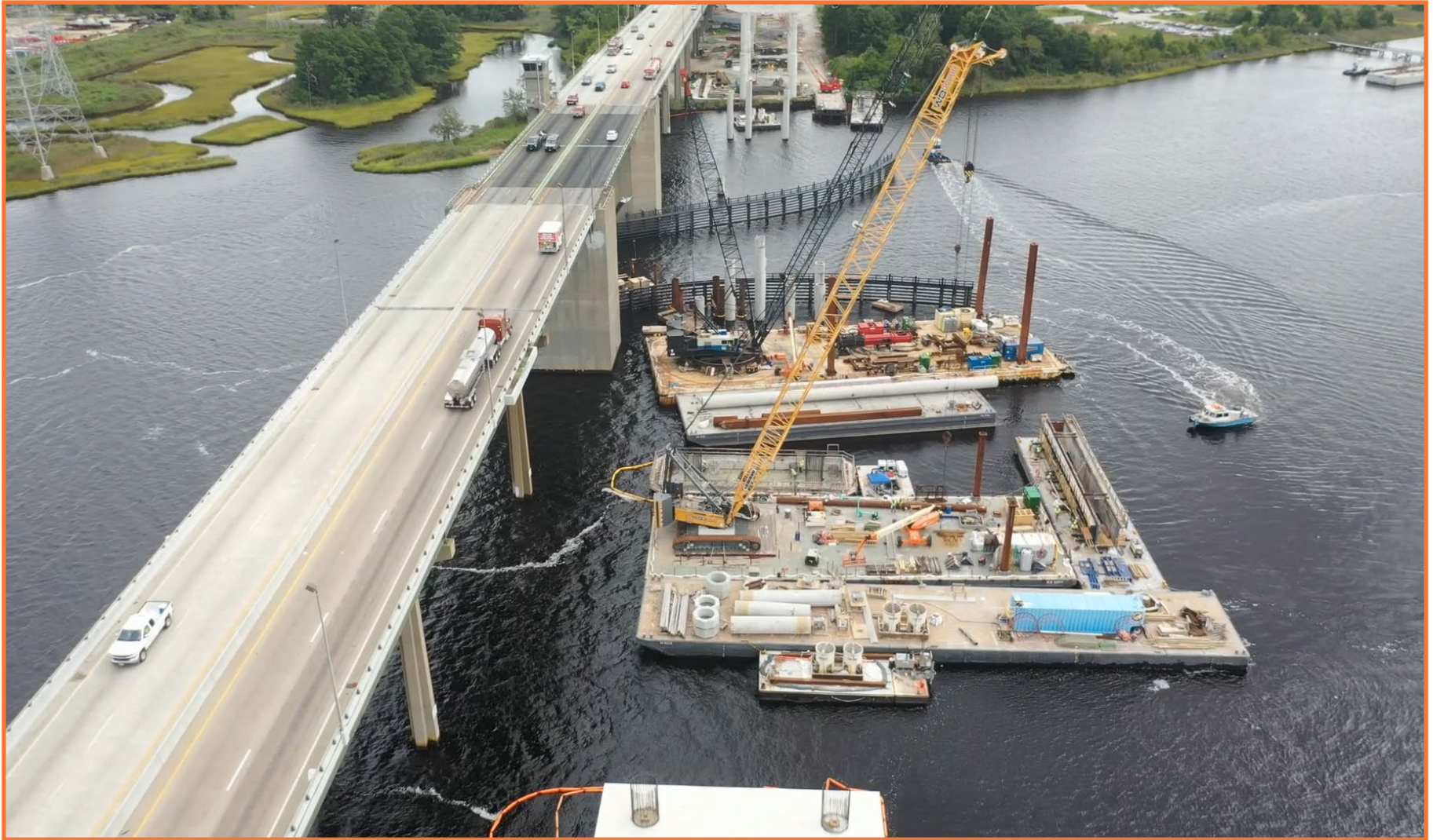




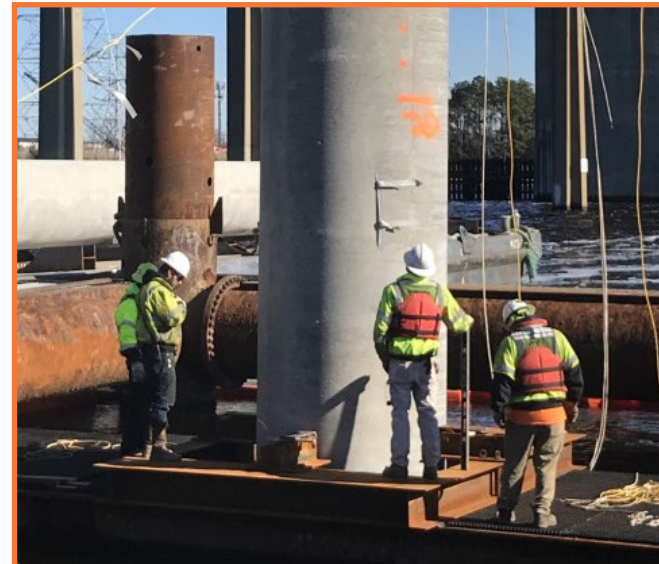
# New High Rise Bridge (River) – Piers 8 to 13



# New High Rise Bridge (River) – Piers 14 to 19

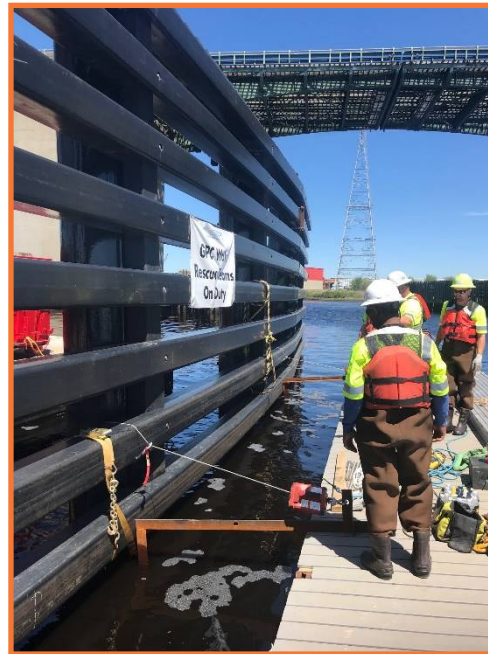


# 66" Diameter Piles on New High Rise Bridge (River)

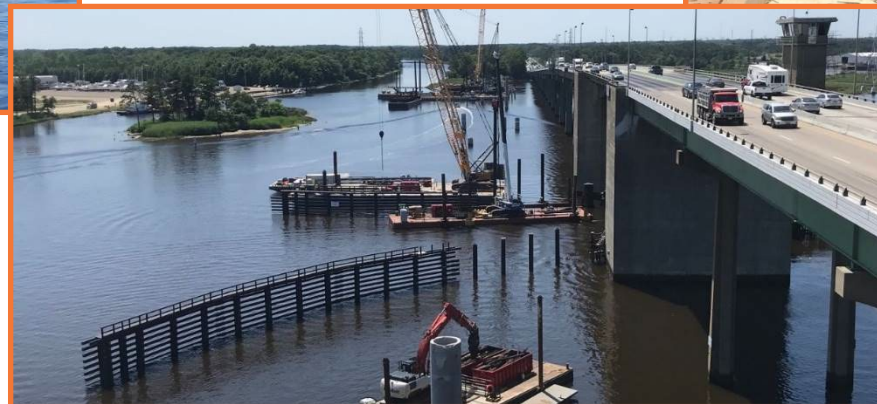


# Fender System

## Existing Fender (Timber)



## New Fender (Fiber Reinforced Polymer)



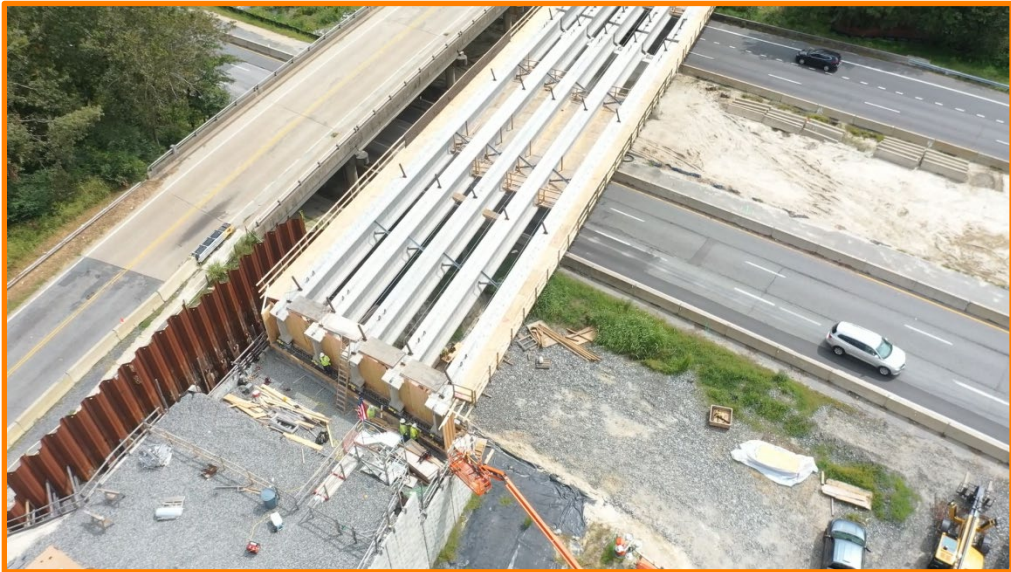
# New High Rise Bridge (East Land) – Piers 19-31



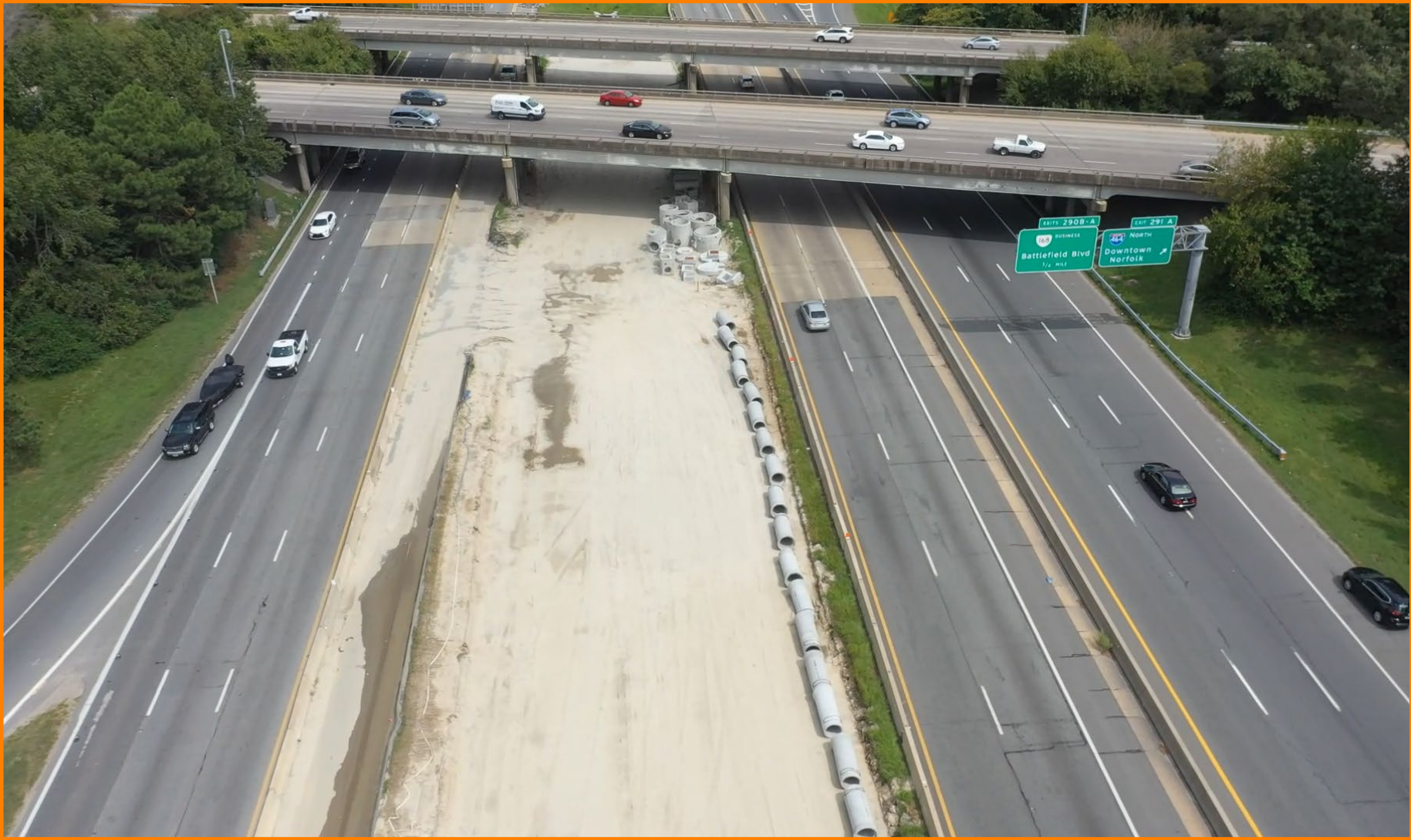
# Piers on New High Rise Bridge (East Land)



# Great Bridge Blvd Bridge Replacement




# Roadway Segment East 2






# Traffic Switch on Roadway Segments East 1 and East 2



Project Alert - Oct. 7, 2020



### I-64 Southside Widening and High Rise Bridge Expansion Project

**New work zone starting on I-64 west near the Great Bridge Boulevard overpass**

Motorists traveling on I-64 west (towards Virginia Beach) should anticipate a new, temporary traffic pattern near the Great Bridge Boulevard overpass at the start of the collector-distributor road (outside lanes) beginning as early as Oct. 13.

The collector-distributor lanes (outside lanes) will be reduced from two lanes to one lane from Great Bridge Boulevard to just west of the Battlefield Boulevard exit. All exit ramps will remain open during this new traffic pattern.


This traffic shift will be in place for several months to allow crews to safely remove the existing concrete barrier wall that separates the interstate lanes from the collector-distributor lanes, install new pavement, and complete other construction activities to facilitate the new future travel lanes that will tie into the new High Rise Bridge currently under construction.

Crews will install temporary concrete barriers to create a safe work zone between the existing mainline (inside lanes) and collector-distributor road (outside lanes).

In order to establish the temporary work zone and traffic shift, crews will use overnight single-lane closures in this section of the corridor on I-64 west, Oct. 13-15, starting as early as 7 p.m. each night until 5 a.m. the following morning.

All project work and scheduled closures are dependent upon weather conditions.

While the new traffic pattern is in place, motorists are reminded to obey the reduced 55 mph speed limit, be prepared for the new work zone, and be mindful of crews working on the interstate.



I-64W Temporary Traffic Pattern Starting Oct. 2020



Map labels:  
- BEGIN Westbound Collector Distributor Lane Reduction (orange box)  
- END Westbound Collector Distributor Lane Reduction (green box)  
- Great Bridge Blvd (blue label)

For a full listing of project impacts, visit [Traffic Alerts](https://www.64highrise.org) on [64highrise.org](https://www.64highrise.org).

For information on lane closures necessary for maintenance and construction throughout Hampton Roads, drivers can visit [511Virginia.org](https://www.511Virginia.org), download the [511VA smartphone app](https://www.511VA.org), or dial 511.

# High Rise Bridge Video

# Stay Informed

- **Project Website – [64highrise.org](http://64highrise.org)**
- **Sign up for Project Updates to your email**
- **Follow VDOT Hampton Roads on:**
  - **Twitter - [@VaDOTHR](https://twitter.com/VaDOTHR)**
  - **Facebook (Group – [VDOT Hampton Roads District](#))**
  - **NextDoor**

